

Location Brief

In the early stages of development for our production, we came up with some ideas for where the opening sequence would take place and how we wanted our film to look aesthetically: For example we wanted to use a hotel like location in order to make the idea of our character being on the run more believable. This was shown throughout our planning from our mind maps plot etc. We therefore had to find potential locations which were available to use which we could use in order to fit in with our ideas, we found this quite hard to do as there were very few locations available to us which were able to fit in with the style that we chose, we therefore decided to widen our ideas for the locations which could be used for our film: we started our recce by looking at locations we already had available to us such as our/friends/families homes. We then took pictures of the locations we could use and analysed them for their advantages, disadvantages or hazards etc.

Location 1

The first location we visited was the house of one of our group members, we thought this would be a good potential location to use as we knew the location well and the distance wasn't too far away and took us roughly 30 minutes to get there from school.



Location details:

- Detached house/fairly secluded – This means there will be no noise coming from neighbours and is pretty private
- Road Access – There is a main road directly in front of the location, this means very easy access for us when bringing equipment and traveling to the location. However, there is a potential for large amounts of noise coming from the roads etc.
- 2 story house with attached annex – Very spacious and easy to transport equipment across the location
- CCTV – In the early stages of developing our opening sequence, there was a scene which involved using 'CCTV footage' showing the character walking towards the boot of a car etc. This location would've been great for this sequence as there was already CCTV set up there, this meant we could have used the CCTV camera itself in order to capture the footage. We later decided to cut this scene from the opening sequence as we felt it would draw the audience away from the sequence and thus decided that it could have been shown at a later part of the film.
- Security – The location also provided good security for our equipment etc. if we were to leave our equipment at the location between shoots due to the gated entrance to the house etc.

This is the room which we thought would be best to use for our opening sequence, this location would be used for the majority of our sequence.

- Lighting – The location has a large amount of lighting from overhead lights, this makes it easier for the crew when setting up equipment and for lighting up the location when filming. However, if we wanted to make the location look darker for the sequence we could adjust the light/colouration in the editing stage of post production.
- Spacious – Large open area for crew to move about and transport equipment to and from the location.



This would be the second room used in the sequence for this location, this is where our character goes to wash his face etc.

- Open area – the bathroom is spacious which would allow the crew to get into the bathroom with the equipment in order to shoot the sequence.
- Lighting – Again, the area is very bright and has a window to let in a lot of natural lighting which can be edited later on in production



The following is a summary of the advantages and disadvantages for this location and why we might choose it:

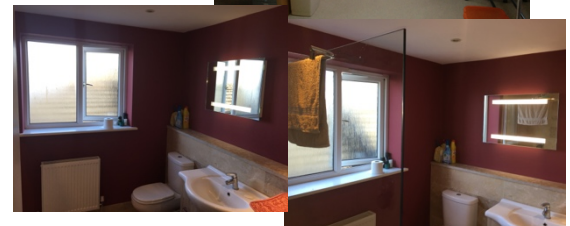
Pro's	Con's
Very spacious – this would allow us to move all of the equipment freely around the location without any complication.	Modern aesthetic- Due to the design of the interior of the location it looks very modern and up to date. This could be a problem as it isn't very suitable with the tone and brief of our original ideas.
Easy Access – The location is very easy to access due to the main road just outside which makes it easy for crew to get there.	Potential noise- While the location is fairly secluded, there is a potential for noise from the main road just beside the location.
High Security – The location has a high level of security if we were to leave equipment there.	Very bright- This location has very bright lighting and interior, this may therefore mean that it would contrast with our original ideas.

Location 2

The second location we visited was my own house, we thought this would be a good potential location to use as the location was very close to school and was therefore easy to get to.

Location details:

- Detached & secluded – This location is a detached house with fairly little noise coming from neighbours and is in a quiet and un-busy area.
- The house has a loft conversion which is used as a spare room with small study and living area. We thought this could be another good potential location because it was fairly practical for what we wanted our scene to look like etc.
- Road Access- The location has a large drive with plenty of space move crew/equipment to the location.
- Security- This location is also fairly secure as it has a gated entry also.



Here's the room which would be used for the main scene of our opening sequence, we thought this could be quite a good location to use as it is very open and would allow us to move around the location with equipment easily etc.

- Space- As said earlier, the space for this location is pretty generous, this would allow us to move all of the equipment and crew around while filming sequences from different angles
- Props- There are already a variety of props in this location such as sofa, beds, lamps, desk etc. This would help to make our sequence perhaps look more authentic, however it also contradicts the style that we would have wanted for the scene because of some of the brightly coloured elements.
- This location also has Velux windows, this allows plenty of light to enter the space and light the set, however it may pose a problem as there is no blinds in order to darken the area, however this could be avoided by shooting at night when there is little light, which in turn could pose a problem if people cannot shoot at that time etc.



This is the second room that would be used for this location, this would be the bathroom sequence where the main character goes into the bathroom and washes his face and looks into the mirror etc.

- Design – The design of this room is fairly modern such as the shower and basin and mirror etc, this also contradicts some of our ideas about what we wanted our opening sequence to look like such as the dark and tense themes that we wanted throughout.
- Lighting- Again, this space is very bright which could cause potential problems similar to those.
- The props in this room are also pretty suitable, for example the sink is good for our sequence when the character goes to wash his face etc. The cupboards are also pretty suitable also, as in our sequence we've planned a shot where the character is looking in the cupboards for alcohol, the cupboards in the room are also suitable for this as they are big enough to place our camera inside them looking towards the character for some creative shots in the sequence.



Pro's	Con's
Location- Close to school and is easy to access for group members and to transport equipment between locations.	Modern aesthetic- The design of this location doesn't fit our original ideas that well as it is quite modern and our ideas involved quite dark themes etc.
Spacious – This location has quite large spaces which helps us to film with ease and transport all of the equipment etc.	Lighting- the lighting throughout this location is rather bright, particularly on the third floor, along with the fact that there is no blinds, it could make it hard for us to achieve the style we wanted and would therefore rely on us editing the colours in post production which is particularly time consuming and technical to do.
Secluded- This location is particularly secluded as it is not near any main roads and there are few neighbours. This means that there is less chance of any disruptions throughout shooting different sequences such as noise etc.	

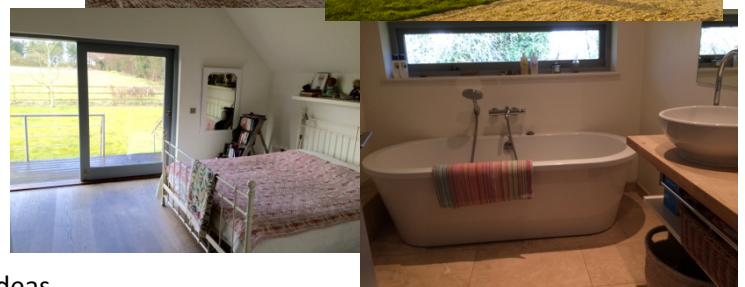
Location 3

The third location we visited for our recce was a friend's house, we thought this would be a good potential location for a number of reasons however it was considerably far away and took around 40 minutes to get to the location. Its important to note that this was the location that was used for the storyboard of our opening sequence



Location details:

- Detached house/very secluded – the area is very secluded with virtually no noise coming from neighbours or roads.
- Barn conversion – Gives the location a unique aesthetic, however there is also a very modern extension which may look out of place with our ideas.
- Large garden with gated entry – makes it easy for transport and additional security for equipment etc.
- Open spaces- the rooms are very open and have a lot of natural light in order to light sets etc.



Here's the room for this location that would be used for our opening sequence, the room is an open space with a floor to ceiling sliding patio door, this allows a lot of light to enter the space and light the room with ambient lighting but also overhead lights. The room also has an en-suite which could've been used for the bathroom scene of our opening sequence.

- Lighting- As said earlier, there is a lot of ambient lighting available but also lights from lamps and overhead lighting for alternative lighting methods, this may make it difficult as we want the tone of our scene to be dark, the open area may therefore make it hard for us to capture our sequence in the way we wanted.
- Spacious – This area is also very spacious in order to allow plenty of space for equipment.
- Props – The room also has a variety of props which we could use for our sequence such as the king-sized bed, side tables and lamps which help to create the tone we want for our sequence. The room was very uncluttered which would again, allow us to move in and out of the location with props and equipment etc.
- Style – The colours and in the room are fairly neutral with mostly white colours, this means that it could easily fit in with the style of our motel/hotel scene ideas for our sequence.



Here's the second room that we would use for this location, this would be the bathroom scene of our opening sequence. As said earlier, the room for this location has an en-suite which is ideal for our film as the sequence involves the character getting up from bed going towards the bathroom etc.



- Modern design- The bathroom for this location is very modern, it includes a mirror which covers one wall, this may therefore make it hard to film our sequence as it may be hard to shoot the scene without the cameraman/camera in the shot.
- Lighting- The bathroom has little ambient lighting coming from outside, however this was not a big concern for us as we knew that we wanted our scenes to be quite dark and tense. There was also plenty of other sources of lighting such as overhead lights etc.
- Again, the space was pretty clean with next to no clutter left around, which would let us move around the space easily etc.
- Electricity sources - Due to the fact that no plugs or energy sources in the bathroom of the location, we would need to make sure that all of our equipment is charged up for when we were to shoot so that we wouldn't have any difficulty if the batteries were to run out etc.

Pro's	Con's
Spacious- Overall, this location is very spacious with little clutter and mess left around, this makes it easy for us to capture a range of different camera angles and shots while being able to move equipment/crew around the location.	Distance- This location was pretty far away, taking us around 40 minutes to get there from school. This could pose as a particularly big problem as it could be hard for all the crew members to get there and transport equipment there.
Secluded – This location is very secluded with next to no people or noise coming from near roads/houses.	Modern look- The interior of this location has a very modern look to it, this may be a problem as it contrasts slightly with the tone we wanted to achieve.
Secure- Along with the location being very secluded, it is also very secure with gated entry and alarm systems etc.	Bright- Because of the design of the location, there is a lot of ambient lighting let in from the window/patio door, along with the fact that there are no curtains, this could pose as an issue depending on the times which we are able to film on the location.
	Energy sources- This location has little plug sockets around, this may make it hard or pose as a problem should we run into technical difficulties.